



Professional OEM/ODM Bag  
and packaging Manufacturer  
Connecting Design  
with Excellence

# ABOUT US

Artech Beauty is a vertically integrated bag and packaging manufacturer, crafting refined solutions with precision and purpose.



## Who We Are

We specialize in premium bags crafted from PU, nylon, and advanced materials, supported by full OEM & ODM services and a global production network across Asia and America. With deep expertise in material sourcing and construction, we transform concepts into market-ready products.

Our cross-regional capabilities ensure flexibility, speed, and consistent quality across every project.

## Product Range

Our comprehensive production capabilities cover a wide variety of categories including:

- Fashion Handbags • Backpacks Cosmetic Bags • Travel Bags • Rigid Boxes • Mailer Boxes

## Our Commitment

From design to production and packaging, we deliver seamless one-stop development—combining quality, efficiency, and global manufacturing flexibility.

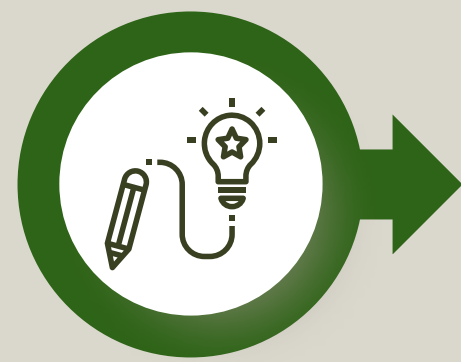


GLOBAL PRODUCTION NETWORK

100+

EMPLOYEE QUANTITY

# COLLABORATION WORKFLOW



01

## Design and Pattern Making

Customer provide the design and factory start to draw the pattern



02

## Quotation & Agreement

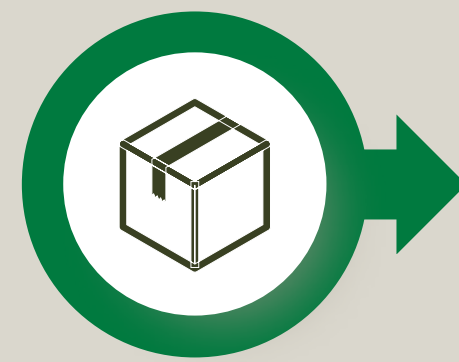
factory provides a formal quotation based on design and materials.



03

## Prototype sample making

Analyze trends and customer needs to validate the product idea.



04

## Packaging & Shipping

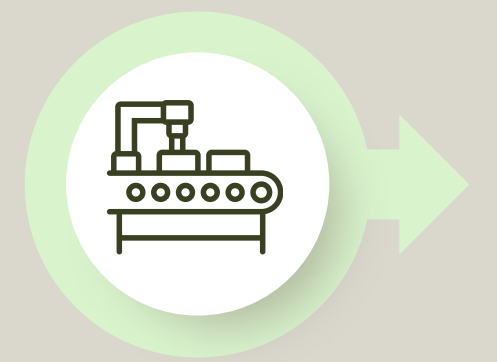
Finished products are packaged according to client or brand requirements



05

## Sample Feedback & Confirm

If changes are requested, the factory adjust and get the confrimation from customer.



06

## Mass Production

The factory begins mass production according to the final approved sample.

# WHY CHOOSE US



## Professional Portfolio

- Serving a wide range of industries, including cosmetic and sportswear packaging
- Supply chain coverage across Taiwan, China, and Southeast Asia
- Project experience serving brands such as Prada, Coach, and Gucci

*Exceptional expertise and extensive industry experience.*



## Global Resources

- Production facilities across Taiwan / China / Vietnam / Indonesia.
- All facilities comply with ISO-certified quality standards.
- Strong R&D capabilities focused on market trends and innovative design.
- Capability to create product series that align with brand identity and strategic goals.

*global capacity with localized precision.*



## Local Manufacturing & Cost Efficiency

- Local production ensures competitive pricing
- Providing clients with versatile options through ODM & OEM services.
- ISO-certified

*Efficient production and strict quality check*

- worked across beauty products, packaging, and now cosmetic bag manufacturing
- global customer service experience.
- one stop shop service for cosmetics
- comprehensive knowledge for beauty industry



WHAT'S MORE,  
WE UNDERSTAND BEAUTY  
LOGISTICS



# MULTI-FUNCTIONAL BAG SOLUTIONS



## Everyday Bags

Designed for daily use with lightweight materials and smart compartments; ideal for commuting, office, and casual outings.



## Beauty & Cosmetic Line

Compact designs with organized compartments and easy-to-clean linings; ideal for storing makeup and skincare at home or on the go.



## Travel & Outdoor Bags

Durable, spacious bags with reinforced structure; perfect for short trips, business travel, and outdoor activities.



## Accessories

Small pouches and organizers for gadgets, stationery, and daily essentials; adding convenience to everyday life and travel.

- **Everyday bags**



- **Travel & Outdoor bags**

- **Beauty & cosmetic line**



- **Lifestyle Accessories**

# OUR CAPABILITY

**8+**

high-volume production lines

**20+**

professional development employees

**3-7 days**

R&D Sample Lead Time

**45k+**

Monthly capacity



# MANUFACTURE WORKFLOW

01

## Preparation



### Design & Pattern

Reviewing technical drawings & creating paper patterns.

### Material Sourcing

Selecting cost-effective fabrics matched to function.

02

## Fabrication



### Precision Cutting

Die-cutting foam, nylon, and leather components.

### Sewing Assembly

Stitching panels to form the main bag body.

03

## Refinement



### Hardware Install

Attaching buckles, zippers, and logo plates.

### Finishing

Trimming loose threads, cleaning edges, and binding.

04

## Assurance



### Inspection (FQC)

100% check on function, lining, and appearance.

### Delivery

Final packing and shipment arrangement.



# QUALITY CONTROL

## RAW MATERIAL INSPECTION

- Color inspection of raw materials.
- Texture and durability testing.
- Defect detection and recording.
- Recycle material sustainability check

## PROCESS INSPECTION

- Monitoring cutting and production processes via SOP.
- Detailed quality checks and documentation.
- Sewing and Stitching defection check.

## SAMPLE INSPECTION

- Verify uniform stitching tension and reinforce all stress points for durability
- Confirm smooth zipper operation and secure mounting of all hardware/fasteners.
- Trim threads, perfect edges, and verify shape consistency.



# MATERIAL OVERVIEW



Explore our extensive library. From technical nylon to premium vegan leather, we source the perfect texture for your design



### **Oxford**

Durable and structured for everyday backpacks, totes, and commuting use.



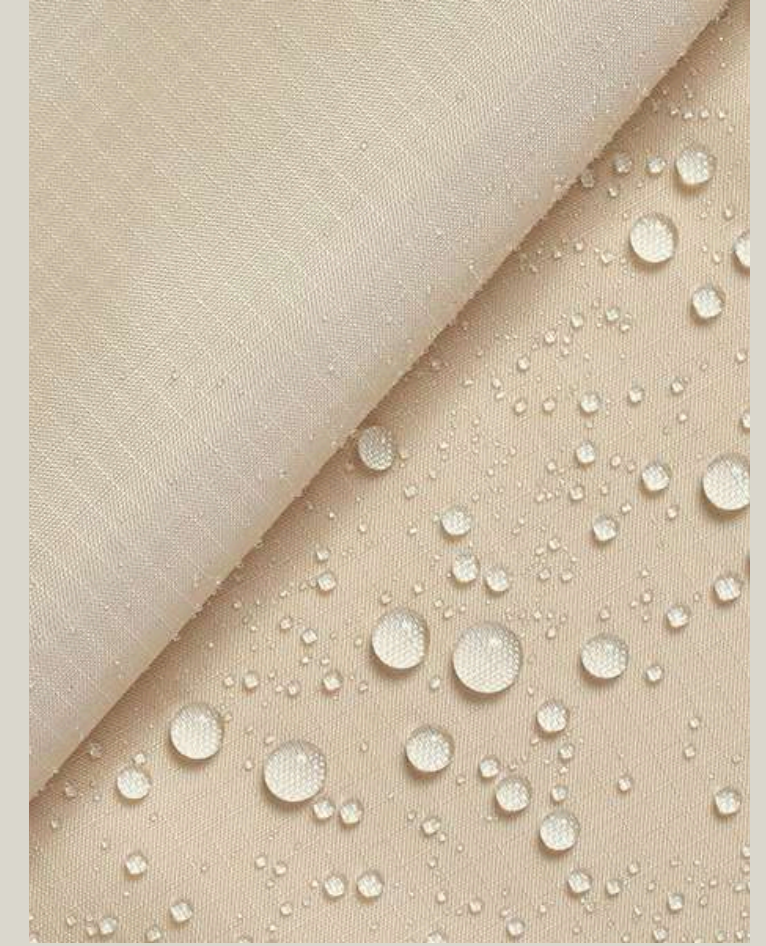
### **Ripstop**

Lightweight and tear-resistant for travel, outdoor, and active lifestyle bags.



### **Taslan**

Soft, cotton-like feel for casual, sporty bags with a premium hand-feel.



### **Waterproof function**

Water-repellent protection for rainy-day commuting, travel, and gear safety.

# NYLON MATERIAL

# PU LEATHER

CUSTOMIZABLE TEXTURES, COLORS & COATINGS AVAILABLE.



## Patent / High-gloss PU

Best for fashion-forward statement bags and evening styles that want a bold, glossy look.



## Soft Napa

Great for soft, slouchy bags and customers who prioritize a smooth, luxurious hand-feel.



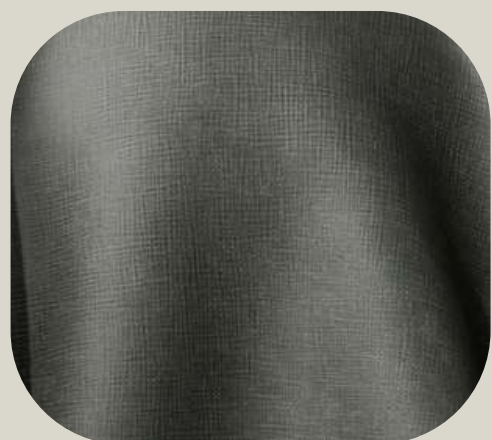
## Embossed PU Leather

For everyday bags needing added texture, scratch resistance



## Metallic PU

Suited for trendy collections, party looks, and seasonal highlights. Cosmetic bag is suitable for this material.



## Saffiano PU

Perfect for structured handbags and business styles that need durability and easy maintenance.



## Croc Embossed PU

Ideal for elevated, classic-fashion designs that want a sophisticated embossed texture.



# OTHER MATERIAL OPTIONS



## Plush Fleece Fabric

Soft and cozy for beauty pouches, winter collections, and comfort-focused styles.



## Sherpa Fleece

Warm, textured look for trendy seasonal bags and lifestyle accessories.



## Polyester Canvas Fabric

Durable and structured for everyday totes, backpacks, and casual outdoor use.



## Neoprene

Cushioned and water-resistant for sporty bags, laptop sleeves, travel organizers, and cosmetic pouches.



## EVA

Lightweight and protective for structured inserts, cosmetic organizers, and travel cases.



## TPU

Clear, glossy, and easy-to-clean for transparent bags, waterproof pouches.

# ACCESSORIES



Plastic zipper



Metal zipper



Colorful zipper



Waterproof zipper



logo bearing zipper

## ZIPPER

## Logo application



## Stud & hardware

# BAG PENDANT

MORE THAN JUST A BAG, IT'S A CANVAS FOR YOUR IDENTITY.

## Mixed-material pendant

Stylish versatility—from delicate silk to rugged woven cords, providing a diverse range of choices



## Beauty Case Keychain

Carry your beauty essentials with you, wherever you go.



## Beauty-Inspired hardware

beauty-inspired charms that add a feminine touch and premium detail to the bag.



## TPU & Microinjection logo pendant

Durable TPU or micro-injection logo pendants that highlight branding with a clean, modern look.



# STRAP TYPE

REDEFINE YOUR CARRY

## Jacquard Woven Webbing

Intricate jacquard weave with a tactile, premium feel.



## Hybrid Material Fusion

A seamless blend of elegant silk scarves, premium leathers. Creative and Unique.



## High-Density Nylon Webbing

industrial-grade materials paired with the hand-woven textures.



# CRAFTSHIP FOR BAGS



Most bags is the 'black hole effect'—users can never find what they need. Our design philosophy directly combats this through intelligent organization.



For outdoor bag, we will select the water-repellent surface that allows for quick, simple wipe-down cleaning.



Select the accessories for brand bag to emphasize style.

# SHOE ACCESSORIES

MORE THAN JUST SHOES, THEY'RE A CANVAS FOR YOUR IDENTITY.

## Mixed-material shoe charms

Stylish versatility — from delicate pearls and crystals to woven cords and metal details, offering a wide range of decorative options for laces, eyelets, and uppers.



## Lace & strap accessories

Designed to attach easily to shoelaces, straps, or eyelets, adding personality, texture, and visual focus to everyday footwear.



## Fashion-inspired hardware

Fashion-forward charms inspired by jewelry and lifestyle accessories, bringing a playful yet premium touch to sneakers, flats, and boots.



## TPU & Micro-injection shoe charms

Durable TPU or micro-injection charms designed for shoes, combining lightweight comfort with bold branding and long-lasting wear.



# FACTORY ENVIRONMENT

---

## Sample room

These photos show our professional bag manufacturing background. All samples are produced on standardized sewing lines, following the same procedures as mass production.

From material cutting to stitching and final inspection, every bag is carefully checked to ensure the quality meets international brand standards.

---



# FACTORY ENVIRONMENT

---

## Factory office/ space

We are not only focused on sewing lines, but also on how the whole factory is managed.

Dedicated office space, separate material warehouses, and labelled storage areas allow us to keep every project in order and strictly comply with our internal procedures and customer requirements.

---



# FACTORY FACILITY

---



## Cutting die machine

Material is precisely cut using die-cutting to achieve accurate shapes and sizes, ensuring consistency across all products.



## Forming stitching

Material is precisely cut using die-cutting to achieve accurate shapes and sizes, ensuring consistency across all products.



## Stitching quality

The stitching quality is quite important for the factory, and our factory focus on maintaining in order to make the structure better.

# PRODUCTION MACHINERY

One-stop production procedure in our manufacturing facility.



**Poly Film Blowing Machine**

**Printing Machine**

# PACKAGING SOLUTIONS



## **E-commerce Packaging**

Designed for efficient shipping and product protection. Lightweight yet durable structures ensure safe delivery while optimizing logistics costs.



## **Cosmetic Color Box**

Precision-printed cartons tailored for beauty and skincare products. Combining structure, branding, and shelf appeal for retail-ready presentation.



## **Rigid Gift Box**

Premium handmade boxes crafted for luxury positioning. Refined materials and finishing details elevate brand value and unboxing experience.

# E-COMMERCE PACKAGING

DESIGNED FOR SHIPPING, BUILT FOR BRANDING

## Mailer Boxes & Shipping Cartons

Durable structures designed for safe transportation and cost efficiency.



## Courier Bags & Protective Packaging

Lightweight, tear-resistant solutions for high-volume e-commerce delivery.



## Custom Branding Solutions

Fully customizable printing to enhance brand visibility during shipping.



## Sustainable Material Options

Eco-friendly materials supporting recyclable and responsible packaging.



# COSMETIC COLOR BOX

ELEVATE YOUR PRODUCT PRESENTATION

## Precision Printing Technology

High-resolution printing for vibrant colors and consistent brand visuals.

## Material & Structure Flexibility

Various paper options and structural designs tailored to product needs.

## Retail-Ready Packaging

Designed for shelf impact, combining aesthetics with functional protection.



# RIGID GIFT BOX

MORE THAN PACKAGING, IT'S A STATEMENT OF BRAND VALUE.

## Premium Rigid Structure

Solid board construction ensures durability and a refined, high-end feel.



## Magnetic & Drawer Designs

Versatile opening styles including magnetic closure, drawer, and lift-off lids.



## Luxury Finishing Options

Foil stamping, embossing, and specialty papers enhance brand identity.



## Custom Inserts & Protection

Tailored inserts for secure product placement and elevated unboxing experience.

