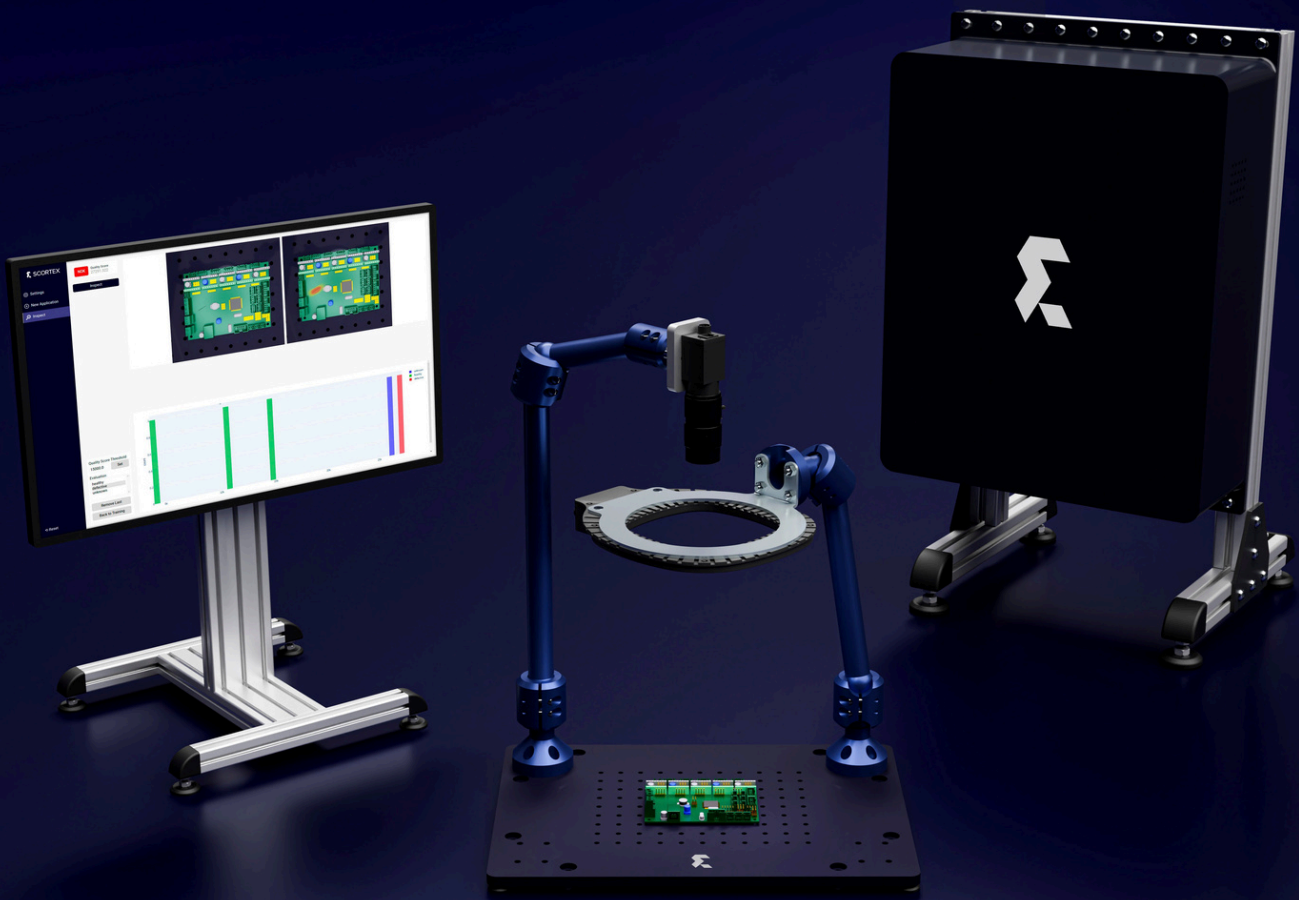




AI-powered automated visual inspection



Data sheet

Spark
Spark Multi View

Our products

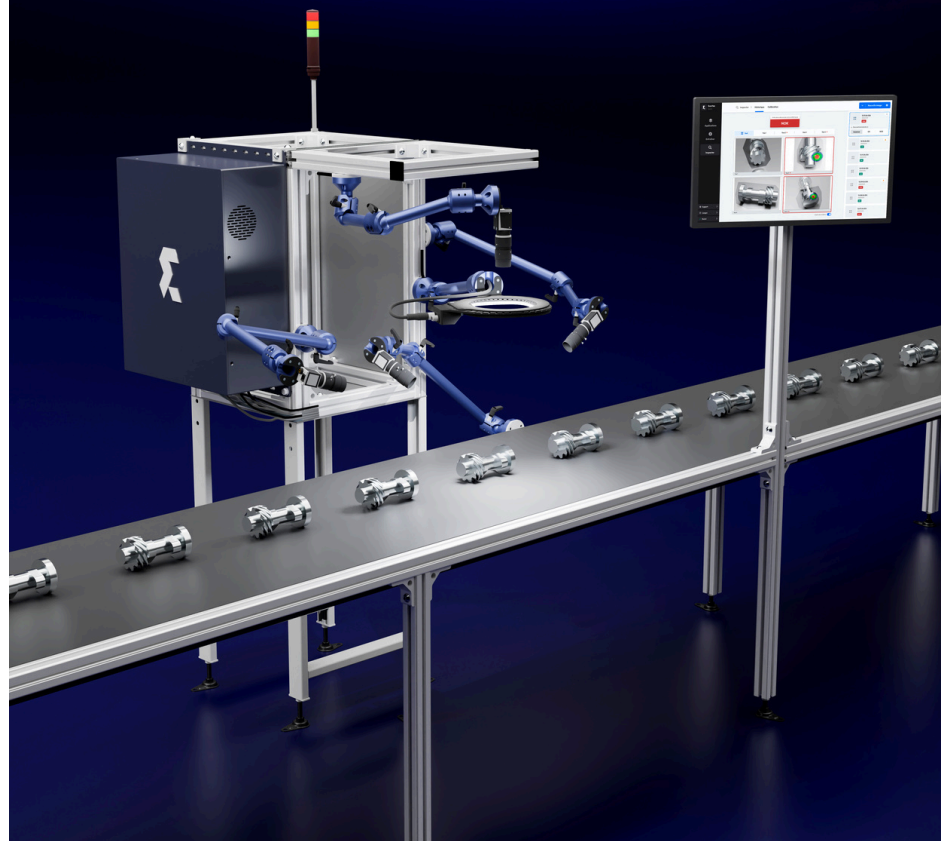
Spark

AI-powered quality control.
Instant. Reliable.



Spark Multi View

Spark combines up to 4 cameras for
high-performance inspections on
challenging projects.





Why choose our solutions for better quality control?



From 1 to 4 cameras

Visual inspection, including complex and shiny parts. Up to 3 parts per second



3 to 20 times faster

Than manual inspection, eliminating bottlenecks in quality control



AI high performance

Detect even the subtlest aspect defects



Real-time quality reports

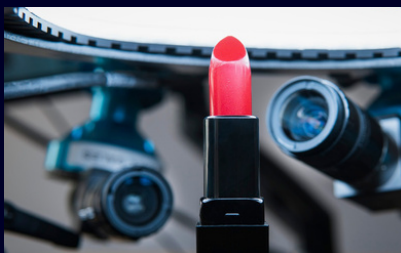
Through the Quality Center web portal and the power of the cloud, access all your quality data, reports, and traceability remotely and in real time



Access to premium support

Support from deployment to performance validation

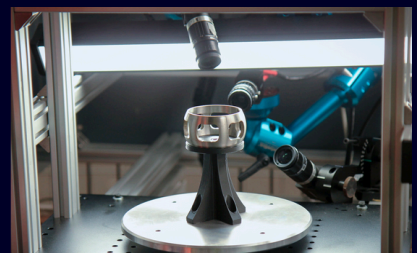
Spark and Spark Multi View help you reduce your quality costs.



Cosmetics



Packaging



Automotive



Forging and casting



Metal parts



Plastic injection molding



Spark and Spark Multi View

Beyond a simple vision system.

What is included in Spark and Spark Multi View kits



Equipment



Software



Commissioning



Maintenance



Updates

	Spark	Spark Multi View
Technical		
Kit contents	1 camera	2 to 4 cameras
	1 light	1 to 4 lights
	22" touch screen	
	Cables (power and data)	
	Poly-articulated arms + camera support plate	
Central unit contents	Edge computing platform	
	PLC	
	4G / Ethernet modem	
	Power supply	
Equipment features	Box: 560 x 400 x 180 mm	
	Arm: 720 mm max. length	
	Camera + lens: 140 mm long	
	Power supply: 10-220V AC / 1000 W Max	
	5m for cables from Box to cameras and lighting. 2m for cables from Box to monitor.	
Light power Cameras	Standard 60W. More on request	
	Quantity : 1	Quantity: 2 to 4
	Visible or UV, infrared spectrum	
	Matrix sensor	
	Lens: C-Mount	
	Camera resolution: standard 2.3 MP	
	Image format: 1920 x 1200 px	



Spark and Spark Multi View

Beyond a simple vision system.

Spark		Spark Multi View	
Integration into the industrial environment			
Operating temperature	0-40°C		
IP protection index	IP20		
Communication			
Communication protocol	Input: 24V PNP signal on 4-pin M12 connector		
	Output: 2 24V signals on a 4-pin M12 connector		
	GPIO		
Use cases			
Size of inspected parts	30mm x 30mm	30 mm x 30mm	
	→ 1000 x 1000 mm	→ 2000 x 2000 mm	
Ratio of defect area to part	> 0,05%		
area Type of visual defect	Surface defects, pattern, texture. Damage: scratches, dents, burns. Excess or lack of material. Abnormal shapes. Incorrect parts positioning.. Presence/absence/error of components. Contamination by foreign bodies. Incorrect assembly. Liquid volume check. Broken, cracked or chipped parts.		
Types of materials	Metal, glass, plastic, paint, ceramics, wood, textiles, leather, composites, liquids.		
Number of applications handled by Spark and number of images to create a model (min and max)	Standard: 500 applications (more on request) 30 to 500 images to create an application.		
Cadences/ throughput: number of parts inspected per second	3 parts / second max		
Latency: time to process image for quality results	925 milliseconds		
Local data processing and transfer time to the Cloud	Local quality decision (edge computing)		
	Image upload in 1 second		
	Production statistics upload in 1 second		

